



Day-to-day



**GOLMATE®**

home & office



Barware



# GOLMATE®

YOUR CARES WE CARE



## CONTENT

DAY-TO-DAY	05~14
OUTDOOR & SPORT	15~26
HOME & OFFICE	27~46
FOR FOOD	47~52
BAR WARE	53~54





## Golmate

Founded in 1999, a leading Chinese manufacturer and a globally recognized innovator, specializes in the design, development, and production of high-quality stainless steel, plastic, and glass inner liner drinkware.

**20+**  
years experience

**38+**  
serving countries

**40+**  
design patents

**300+**  
employees

**5000,000+**  
annual production



## About Us



Our state-of-the-art manufacturing facilities are equipped with advanced production equipment and are certified by BSCI, ISO14001 and ISO9001, ensuring high-quality and safe production processes. Our production capabilities are designed to meet large-scale order demands while maintaining meticulous attention to detail. Our robust production capacity and stringent quality control systems enable us to respond swiftly to market changes, ensuring that every product meets the highest standards. From the selection of raw materials to the final product inspection, we have a comprehensive quality control process in place to guarantee that each item we deliver is flawless.



Golmate boasts robust in-house research and development capabilities and collaborates with European designers to introduce over 30 unique pieces of personalized drinkware and tableware annually. Our OEM and ODM services have become the backbone of our operations. Our passionate design team is committed to innovation, reflected in our numerous patented designs that showcase our relentless pursuit of quality and creativity.

Established over two decades ago, Golmate has been dedicated to the manufacturing of high-quality drinkware and the development of innovative tableware. We have forged partnerships with numerous globally renowned brands such as Montblanc, Aldi, Lidl, and more, earning a stellar reputation for our distinctive designs and premium quality. Our journey has seen us evolve from producing functional wholesale drinkware to offering a diverse range of products that cater to a varied market.



## Qualifications



## Printing Solutions

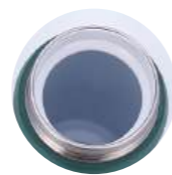


Gradient Rainbow Coating    Rainbow Coating    Gold Plating    Rubber Coating



Laser Engraving    3D Printing    Crystal Finish    UV Coating

## Inner Liner



Ceramic Lining



Teflon

## They Trust Us

Supermarket /Department Store /Retail Chain /Chain Store



Commercial Clients



Airline



Brand



## Contact Us

Email: [info@golmate.com](mailto:info@golmate.com)

Website: [www.golmate.com](http://www.golmate.com)



# DAY TO DAY





Food Grade BPA Free Keep Cold/Hot Non Slip Spill Proof Detachable Lid



## TRUDA dual-sip Thermal Tumbler TMG045



### FEATURES

- Spill-proof lid for mess-free sipping.
- Securely retained straw.
- Stable rubber bottom for added convenience.

**Note:** For straw use: Liquid temperature should be below 45°C.

Material: Stainless steel / PP

Capacity: 550ml

🔥 6H | ❄️ 12H





360° Drinking Lid | Leak Proof | Food Grade | BPA Free | Keep Cold/Hot | Non Slip | Detachable Lid

# 360-TO GO

## THERMO TUMBLER



Non-slip and stylish silicone cover, perfect for active lifestyles  
Customized pattern

TMGY | TMGY-B | TMG056 | TMG056-a | TMG056-b | TMG056-c

Customize Strap Style & Material

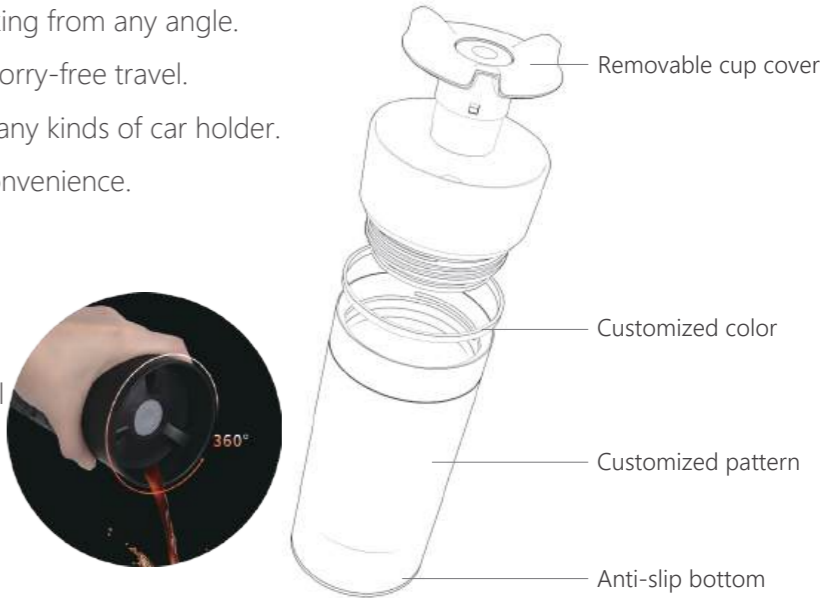
DAY TO DAY

### FEATURES

- Patented design enables easy drinking from any angle.
- Leak-proof and spill-proof lid for worry-free travel.
- 6.5cm bottom dia that suitable for any kinds of car holder.
- Stable rubber bottom for added convenience.

Material: Stainless steel / PP  
Capacity: TMGY: 300 / 360 / 500ml  
TMGY-B TMG056-a/b/c: 360 / 500ml

🔥 6H | ❄️ 12H



## URBAN

Travel Mug

TMG046



### FEATURES

- Innovative patented cap design eliminates "stamp" nose.
- Smart water outlet prevents ice cubes and tea bags from blocking.
- Guaranteed 100% leak-proof and dust-free performance.



Material: Stainless steel / PP

Capacity: 450 / 580ml

6H | 12H



## CONDI

Travel Mug

TMGZ03



### FEATURES

- Patented one-handed press-to-drink mechanism for effortless use.
- Cupholder friendly for on-the-go convenience.
- Suitable for cold beverages (not recommended for hot liquids above 80°C).

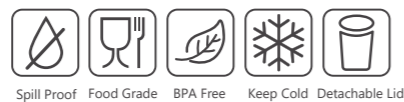


only for cold drink

Material: Stainless steel / PP

Capacity: 350ml

12H



## UPTOWN

Travel Mug

TMG044



### FEATURES

- Patented spill-proof twist-on flip lid for mess-free use.
- Convenient 350ml size for commuting or traveling.
- Sleek and stylish appearance for a sophisticated look.



Material: Stainless steel / PP

Capacity: 350ml

6H | 12H



### FEATURES

- One lid, two ways for sip: straw for cool drink/ open for hot beverage.
- Cupholder friendly.
- Rubber design at the bottom prevents the cup from slipping or tipping.

**Note:** For straw use: Liquid temperature should be below 45°C.

Material: Stainless steel / PP

Capacity: 400ml

6H | 12H



TMG063







TMSA12  
360ml/12oz



TMSA20SS  
600ml/20oz



TMSA30  
850ml/30oz

**Note:** Recommended water temperature below 70°C.( TMSA12/TMSA20SS/TMSA30 )



TMG060-a  
900/1200ml  
30/40oz



TMG060-b  
1200ml/40oz



TMG060-c  
1200ml/40oz



TMG060-d  
900/1200ml  
30/40oz

**Note:** Only for room temperature water and iced beverage.(TMG060-a/b/c/d)



TMG0016  
350ml



FLK119  
500ml



TMG049  
360ml

**Note:** Liquid temperature should below 45°C. (TMG049)



TMG048  
400ml



TMPE04  
220/450ml



TMG055  
350/500ml



TMG077  
350/450ml



TMG047  
400ml



FLGF  
350/500/750/1000ml



FLGF-B  
350/500/750/1000ml



TMG072  
360ml/550ml

**Note:** Liquid temperature should below 45°C. (TMG072)



TMPD04  
380ml



TMG053  
400ml



TMAK04  
380ml



TMGR04  
380ml



TMPN02  
200ml



TMG0014  
230ml



# OUTDOOR & SPORT





Leak Proof Food Grade BPA Free Keep Cold/Hot



## CASUS hook

Thermal Flask

FLHH



Portable hook design

Two choices



Comfortable holding

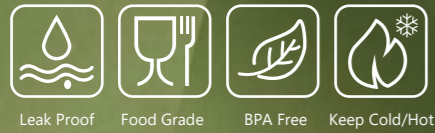
## FEATURES

- Patented design with a portable hook, the lid doubles as a small drinking cup.
- Two switch options: push and pour stopper/screw stopper.
- Stylish hook for both sports and commuting convenience.

Material: Stainless steel / PP

Capacity: 350 / 500 / 700 / 1000ml

🔥 12H | ❄️ 24H



Leak Proof Food Grade BPA Free Keep Cold/Hot



## Oakley rope Thermal Water Bottle

FLK083



FLK083-a1



FLK083-a2



Stainless steel



FLK083-a3



FLK083-a4



Detachable Cord

## FEATURES

- Patented design featuring a convenient rope carrying handle on the lid for easy portability.
- Available customized elements: Handle Rope / Rope Buckle / Carabiner.
- Upgraded detachable cord, easy to remove, dries faster and dishwasher safe, preventing odors.

Material: Stainless steel

Capacity: 550ml

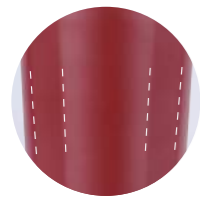
🔥 6H | ❄️ 12H



Portable handle



Convenient flick-up straw



Ergonomic easy-grip surface



FLK122

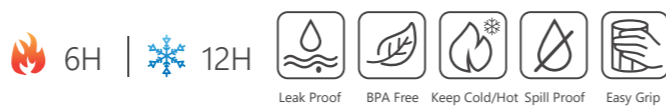
## FEATURES

- Ergonomic easy-grip surface design.
- User-friendly flip-up straw: quick access to drinks anytime.
- Portable handle for easy carrying: great for travel and outdoor use.

**Note:** Liquid temperature should below 45°C.

Material: Stainless steel / PP

Capacity: 500ml



## FEATURES

- Auto-pop flip lid with lock-in position.
- Durable carry handle for on-the-go convenience.
- Ergonomically angled lid for comfortable & hygienic drinking.

Material: Stainless steel / PP

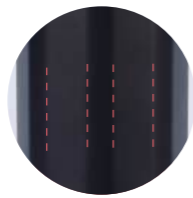
Capacity: 600ml



Auto-pop flip lid



Stable handle for comfort grip



Grip-friendly ridged surface



FLK126



Locking carry handle



Sip & Swig in built-in straw



Push-button opening



FLK127

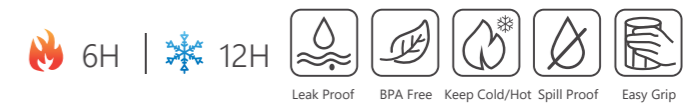
## FEATURES

- Handy carry loop doubles as a lock.
- Convenient dual-sip spout for sipping or swigging.
- Push-to-open lid to keep spout clean and secure.

**Note:** For straw use: Liquid temperature should below 45°C.

Material: Stainless steel / PP

Capacity: 600ml



## FEATURES

- Adjust to any angle to meet your needs .
- Strong magnetic smartphone compatibility.
- Your all-in-one bottle for work, gym & travel.

Material: Stainless steel / PP

Capacity: 650ml



FLK123



Strong magnet



Solid carry handle



FLK124

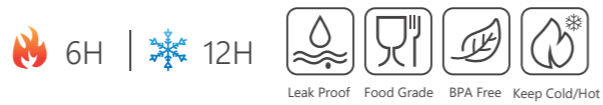
## FEATURES

- Large capacity for long-term hydration.
- Hygienic flip straw with built-in dust cover.
- Comfortable & durable ergonomic soft handle.

**Note:** Liquid temperature should be below 45°C.

Material: Stainless steel / PP

Capacity: 950ml



## FEATURES

- Easy carry to go.
- Large capacity for long-term hydration.
- Ergonomically angled spout enables comfortable drinking.

Material: Stainless steel / PP

Capacity: 950ml



FLK125



FLBD-a1 500/600/750ml | FLBD-b1 500/600/750ml | FLBD-a2 500/600/750ml | FLBD-b2 500/600/750ml | FLBD-c1 500/600/750ml



CLGM 350/500/750/1000ml | FLK0016 500ml | FLK116 500ml | FLK087 400/500ml



FLK099 750/1000/1300ml | FLK111 750/1000/1300ml



5 Replaceable Optional Lids



FLK089-a1  
500/600/750/960ml

FLK089-a7  
500/600/750/960ml

FLK089-a3  
500/600/750/960ml

FLK089-a6  
500/600/750/960ml

FLK089-a5  
500/600/750/960ml

**Note:** Liquid temperature should be below 45°C. (FLK089-a7)



FLK109  
600/1000ml



FLK108  
600ml



FLK0004  
350/500/750/1000ml



FLK096  
500/600/750/1000ml



FLK110  
600/1000ml



FLK112  
600ml

**Note:** Liquid temperature should be below 45°C. (FLK112)



FLBL10  
1000ml



TMAS04  
430ml



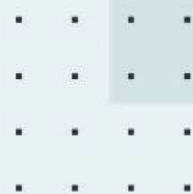
TMPM04  
450ml



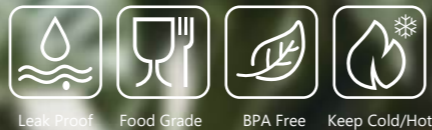
FLAA  
300/500ml



# HOME & OFFICE







Leak Proof Food Grade BPA Free Keep Cold/Hot



# ARCADIA

Thermal Carafe



Exquisitely designed spouts designed for fully drip-free



HOME & OFFICE

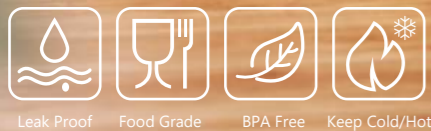
## FEATURES

- Patented design with a splash-proof spout (available in silicone and stainless steel) to prevent leaks and messes.
- Features a smooth ergonomic handle for comfortable holding.
- Ensures 100% sealing with two built-in silicone rings, guaranteeing no leaks from the top.
- Easy-press button for effortless use.
- Allows for brewing loose leaf tea or herbs directly in the bottle.

Material: PP/Glass liner

Capacity: 1.0L

🔥 12H | ❄️ 24H



# IRENE

Thermal Carafe



## FEATURES

- Lightweight Handle.
- Simple-press button and silicone ring prevent spills and leaks.
- Elegant and sleek geometric lines as part of our patented design.
- Available Customized Elements:  
Metal / Plastic body  
Wood / Plastic handle.

Material: PP/Glass liner/wood handle

Capacity: 1.0L

🔥 12H | ❄️ 24H



VJG014

VJG0006

## NATURALIS SERIES

Thermal Carafe

VJG015



### FEATURES

- Natural wooden handle.
- Simple-press button and silicone ring prevent spills and leaks.
- Elegant and sleek geometric lines as part of our patented design.

Material: PP/Glass liner/wood handle

Capacity: 1.0L

🔥 12H | ❄️ 24H

## ZEN

Thermal Carafe



### FEATURES

- Innovative tea strainer for a clean and tidy experience.
- Food-grade glass liner with a plastic surface.
- Easy-to-clean.
- Available Customized Elements:  
Both middle push button or back switch are available.  
Easily screwing up and down to securely lock jug.

Material: PP/Glass liner

Capacity: 0.95L

🔥 12H | ❄️ 24H



VJSB

## FEATURES

- Golmate's insulated vacuum jugs are made with SS18/8 stainless steel.
- The handles are streamlined that meets the ergonomics design and is easy to operate.
- Lids are equipped with a silicone loop for 100% leak-proof.
- All the thermos jugs are available for OEM.

Material: Stainless steel / PP

Capacity: 0.6 / 1.0 / 1.5 / 2.0L



VJS020  
1.0 / 1.5 / 2.0L

VJS021  
1.0 / 1.5 / 2.0L

VJS022  
1.0L



VJTC  
1.0 / 1.5 / 2.0L



VJTD  
1.0 / 1.5 / 2.0L



VJGF-A  
1.0 / 1.5 / 2.0L



VJTS-A  
1.0 / 1.5 / 2.0L



VJTR-A  
1.0 / 1.5 / 2.0L



VJMX  
1.0 / 1.2 / 1.5 / 2.0 / 3.0L



VJTF-a  
1.0 / 1.3 / 1.6 / 1.9L



VJTF-b  
1.0 / 1.3 / 1.6 / 1.9L



VJAN  
1.0 / 1.3 / 1.6 / 1.9L



VJMW  
1.5 / 2.0L



VJS016  
2.0 / 2.5L



VJS017  
1.6 / 2.2L



VJGB  
1.0 / 1.5 / 2.0L



VJGG  
1.0 / 1.5 / 2.0L



VJGL  
1.0 / 1.5 / 2.0L



VJTI-a  
2.0 / 3.0L



VJGH  
1.0 / 1.5 / 2.0L



VJGJ  
1.0 / 1.5 / 2.0L



VJGE-a  
1.0 / 1.5 / 2.0L



VJGE-b  
1.0 / 1.5 / 2.0L



VJS018  
2.0 / 2.5L



VJTJ  
1.0 / 1.5 / 2.0 / 3.0L



VJMG-a  
0.5 / 1.0 / 1.5 / 2.0L



VJMG-b  
0.5 / 1.0 / 1.5 / 2.0L



VJGK  
0.5 / 1.0 / 1.5 / 2.0L



VJGI  
0.5 / 1.0 / 1.5 / 2.0L



VJGD  
1.0 / 1.5 / 2.0L



VJGC  
1.0 / 1.5 / 2.0L



VJMF  
1.0 / 1.5 / 2.0L



VJTE  
1.0 / 1.5 / 2.0L



VJGQ  
1.0L



VJGZ  
1.0L



VJDF  
1.0L



VJGZ-S  
1.0L



VJMQ-S  
1.0L



VJMP-S  
1.0L



VJMI  
1.0L



VJMQ-C  
1.0L



VJMP-C  
1.0L



VJMB  
1.0L



VJG027  
1L



VJG022  
0.95L



VJG024  
1.0L



VJTV  
1.0L



VJOC  
1.0L



VJOO  
1.0 / 1.5L



VJG019  
1.0L



VJG019-a



VJG019-b  
1.0L



VJOF  
1.0L



VJOA-a  
1.0L



VJOA-b  
1.0L



VJGV  
1.0L



VJG018  
1.0L



VJMQ-P  
1.0L



VJOL  
1.0 / 2.2L



VJMK  
1.0L



VJG028  
0.9L



VJGZ-P  
1.0L



VJTG  
1.0L



VJMV  
1.0L

APGH  
1.9 / 2.2 / 2.5 / 3.0 /  
3.5 / 4.0 / 5.0L



APGX  
1.9 / 2.2 / 2.5 / 3.0L



APGD  
2.5 / 3.0L



APGH  
1.9 / 2.2 / 2.5 / 3.0 /  
3.5 / 4.0 / 5.0L



APGG  
1.9 / 2.2 / 2.5 / 3.0 / 4.0L



APGA  
1.9 / 2.2 / 2.5 / 3.0L



APGV  
2.5 / 3.0 / 3.5 /  
4.0 / 5.0L



APGF  
3.0 / 4.0 / 5.0L



APGF-A  
2.5 / 3.0 / 3.5 / 4.0 / 5.0L



APS014  
1.9 / 2.2 / 2.5 /  
3.0 / 4.0 / 5.0L



APS009-a  
1.0 / 1.3 / 1.6 / 1.9L



APS009-b  
1.0 / 1.3 / 1.6 / 1.9L

Yerba mate cups are not included.



APTC-a  
1.0 / 1.3 / 1.6 / 1.9L



APTC-b  
1.0 / 1.3 / 1.6 / 1.9L

Yerba mate cups are not included.



APGC  
1.9 / 2.2 / 2.5 /  
3.0 / 4.0 / 5.0L



APGE  
2.5 / 3.0L



ABBG002  
33.5x24.5x10cm



ABBG001  
23x16.5x4cm



ABBG003  
26x18.5x4cm







APGK  
1.9L



APGF19M  
1.9L



APG003  
1.9L



APG005  
1.9L



APTB  
1.9 L



APGI  
1.9L



APG006  
1.9L



APGJ  
1.0 / 1.9L



APG004  
1.9L



Glass liner



FLGH  
1000ml



VJG020  
1000ml

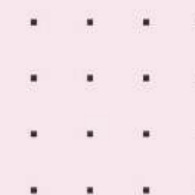


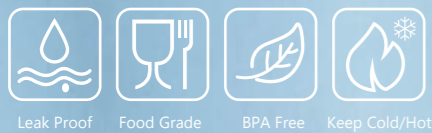
FLFG  
1000ml



VJG021  
1800ml

# FOR FOOD





Leak Proof Food Grade BPA Free Keep Cold/Hot



## MODERNI

Food Jar

VFC0005



PU leather handle Silicone handle



Knitted strip handle



## FEATURES

- Stylish & Convenient Design: Easy-carry Strap handle.
- Safe Materials: Food-graded Silicone & 18/8 Stainless Steel.
- User-friendly storage with a 10CM wide opening for easy and neat food filling.
- Zero leakage assurance.
- Stylish and practical patented design with a sleek color scheme, complemented by replacable colorful leather straps or woven straps for outdoor carrying.

Material: Stainless steel / PP

Capacity: 600ml

🔥 6H | ❄️ 12H



## EUDORA 3-in-1

Yogurt Pot

VFC008



## FEATURES

- Patented design includes a convenient foldable spoon and three compartments for separating wet and dry food, ensuring freshness.
- Versatile: Keeps food cold or warm, outperforming regular yogurt pots.
- Features a transparent visual effect for easy monitoring of contents.

Material: Stainless steel/PP

Capacity: 800ml

6H | 12H

## FEATURES

- 100% Leakproof.
- soft silicone lids are designed for kids, which makes it easy to open and close.
- Easy to clean.

Material:Stainless steel/Silicone

Capacity: 135 / 275 / 500ml

BTX011



BTX012



BTX013



VFC013  
315ml



VFCBD  
500 / 750ml



VFC009  
350 / 500 / 750ml



VFC010  
500 / 750 / 1000 / 1200ml



VFC011  
500ml



VFC0024  
500ml



FLGC  
1000 / 1200 / 1500ml

# BARWARE



TMG074  
300ml



TMG075  
1200ml



TMG068  
700ml



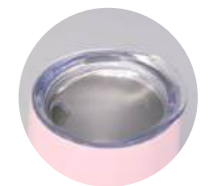
TMG069  
300ml



TMG064  
500ml



TMGU12  
360ml



**Note:** Recommended water temperature below 70°C.  
(TMGU12)

# Gift Set Series



# PDQ Display Series

